

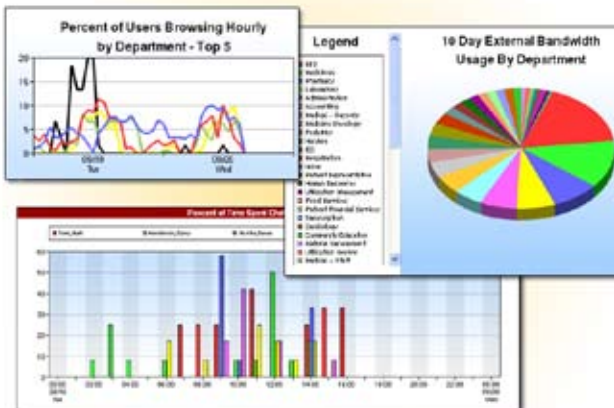


How is your network being used?

Get real-time and historic reporting on network utilization by employee and department.

Features

- **Manager Portal** enables managers to monitor direct reports without burdening IT
- **Manager-level reports** on surfing and chatting by individual and department
- **Alerts** when surfing and chatting exceeds a preset threshold or when employees Remote Desktop or create a secure session
- **Tracks bandwidth** usage by department for forecasting and charge-back
- **Notifies** administrators, managers, or employees of triggered alerts based on fully customizable presets
- **Exports ONA data** to third-party ONA tools, including Orgnet's InFlow
- **Captures** all of an individual's Internet traffic for examination by third-party tools
- **Tracks MAN/WAN** bandwidth for accounting
- **Monitors** enterprise web-based application usage



Gateway Anomaly Detection Dashboard

- Top SSH and Remote Desktop users
- Top SSH and Remote Desktop unknown IPs
- Odd hour access

Employee Activity Dashboard

- Top sites surfed
- Top bandwidth sites
- Top SSH and Remote Desktop IPs
- Behavior surf trends

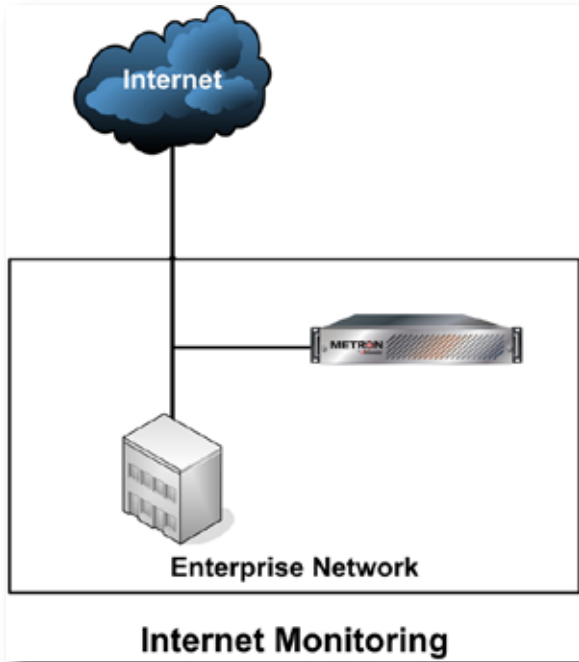
“With incoming data from the government and all of the airports relying on the availability of the information, I need to be able to manage my bandwidth. I need to know how much we are using and who is going where. I don’t want to build out the network because everyone is watching ESPN.”

—Pat Osborne
Senior Vice President of IT, AAAE

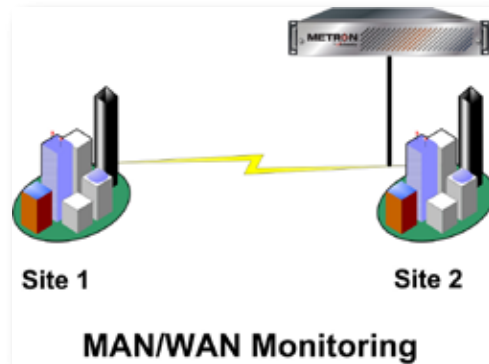


“The eTelemetry solution solved organizational problems as well as IT-specific problems, allowing us to operate county government more efficiently for our tax-payers.”

—Ira Levy
CIO, Howard County, MD



Discover how the enterprise uses the Internet, including surf and chat times, and Remote Desktop.



Track which departments are using MAN/WAN bandwidth.

Specifications:

Dimensions	Metron (2000)	Metron (500)
Enclosure	Rack Mountable 2U with Rail Kit	Rack Mountable 1U with Rail Kit
Dimensions	19"(w) x 27"(d) x 3.5"(h)	19"(w) x 21"(d) x 1.75"(h)
Support		
Standard Warranty	90-day software & phone support with one year hardware support; maintenance plans available.	

METRON is powered by award-winning **LOCATE**:



eTelemetry

Turning Network Traffic into Business Intelligence

41 Old Solomons Island Road • Suite 202 • Annapolis, MD 21401
Phone: 888-266-6513 • Fax: 410-266-0796 • www.eTelemetry.com

